



General Specifications

Document details:

General Specifications for Quark E Series - IP34			
Version	Date	Authors	Change content
V0	10-09-2024	Pradeep	First release



Contact us:

Website: www.leanwatts.com

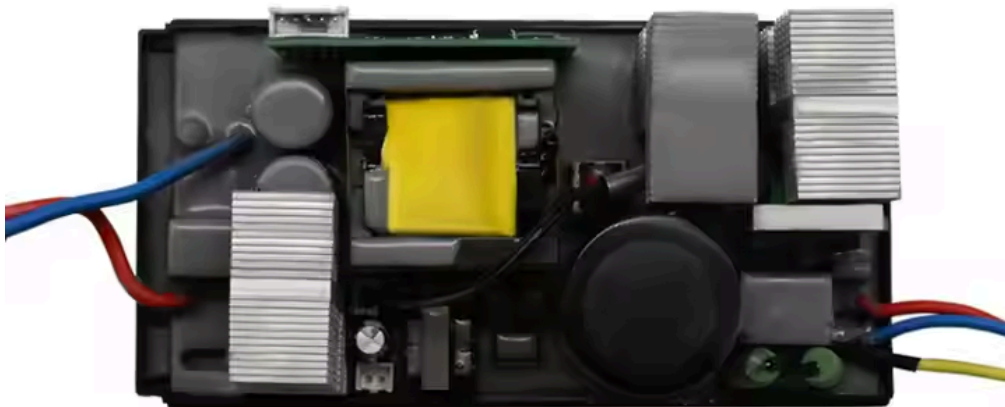
Email: Sujith@leanwatts.com

Address: Leanwatts Product Development centre

A4, NGEF Ancillary Industrial Estate, Graphite India Main Rd, Garudachar Palya,
Mahadevapura, Bengaluru, Karnataka 560048

Features

- Charger for Lithium ion Batteries
- Universal Voltage input
- IP34 for better protection from environment
- Compact
- Aluminium housing for efficient operation
- PFC and CAN (LW-E1500 and LW-E2000) for additional safety and efficiency.
- Multiple safety cutoffs



IP34 rated and Potted



LW-E500 Li-ion Battery charger

Input voltage : 180VAC~260VAC		CV		CC	Transition / Cut-off Current	Net Weight	Size
Model	Nominal Voltage	Li-ion	LiFePO4	A	Li(A)	KG	mm
LW-E500	12V	16.8V	14.6V	15A	1.5A	0.8	161*75*52
	24V	33.6V	29.2V	15A	1.5A		
	48V	54.6V	58.4V	8A	0.8A		
	60V	71.4V	73V	7A	0.7A		
	72V	84V	87.6V	6A	0.6A		

LW-E800 Li-ion Battery charger

Input voltage : 180VAC~260VAC		CV		CC	Transition / Cut-off Current	Net Weight	Size
Model	Nominal Voltage	Li-ion	LiFePO4	A	Li(A)	KG	mm
LW-E800	12V	16.8V	14.6V	20A	2A	1	165*87*63
	24V	33.6V	29.2V	20A	2A		
	48V	54.6V	58.4V	12A	1.2A		
	60V	71.4V	73V	10A	1.0A		
	72V	84V	87.6V	8A	0.8A		

LW-E1200 Li-ion Battery charger

Input voltage : 180VAC~260VAC		CV		CC	Transition / Cut-off Current	Net Weight	Size
Model	Nominal Voltage	Li-ion	LiFePO4	A	Li(A)	KG	mm
LW-E1200	12V	16.8V	14.6V	30A	3A	1.3	183*87*63
	24V	33.6V	29.2V	30A	3A		
	48V	54.6V	58.4V	15A	1.5A		
	60V	71.4V	73V	15A	1.5A		
	72V	84V	87.6V	12A	1.2A		



LW-E1500 Li-ion Battery charger							
Input voltage : 90VAC~260VAC		CV		CC	Transition / Cut-off Current	Net Weight	Size
Model	Nominal Voltage	Li-ion	LiFePO4	A	Li(A)	KG	mm
LW-E1500	12V	16.8V	14.6V	40A	4A	2.1	230*114*73
	24V	33.6V	29.2V	30A	3A		
	48V	54.6V	58.4V	20A	2A		
	60V	71.4V	73V	20A	2A		
	72V	84V	87.6V	18A	1.8A		

LW-E2000 Li-ion Battery charger							
Input voltage : 90VAC~260VAC		CV		CC	Transition / Cut-off Current	Net Weight	Size
Model	Nominal Voltage	Li-ion	LiFePO4	A	Li(A)	KG	mm
LW-E2000	12V	16.8V	14.6V	50A	5A	2.4	249*134*70
	24V	33.6V	29.2V	50A	5A		
	48V	54.6V	58.4V	35A	3.5A		
	60V	71.4V	73V	30A	3A		
	72V	84V	87.6V	25A	2.5A		



Common Specifications

Specification		Common specifications
Functional	Battery type	Lithium ion/ Lead Acid
	Vehicle type	Light Electric Vehicles like two wheelers, buggies etc
	Form factor	Compact Portable charger
	Cooling	Forced air convection (Fan)
	Housing	Aluminium extrusion
	Communication	CAN Optional
	Charging profiles	CC-CV
Input	AC input Phase	Single
	AC input voltage	90-260 VAC single phase
	AC input frequency	50-60 Hz
General/ Environmental	Operating Temp	-10°C to 45°C
	Storage Temperature	-20°C to 70°C
	Protection	OCP/OVP/OTP/SCP, Reverse Polarity, Thermal Derating
	IP	IP34
	Shock	Shock proof
Cable and Connectors	AC cable length	Standard 1.5M, Customizable
	DC cable length	Standard 1.2M, Customizable
	AC connector	Indian 5A/16A/ PRCD, customizable as per requirement
	DC connector	customizable as per requirement
Indication	LED indication	Charging - Red: Fully charged - Green, Error - Red blinking